

4GCMS integrated 4G network camera

Product installation and user manual

Table of contents

1. Introduction to the overall structure of the camera.....	
1.1. Camera structure	- 1 - Internal
1.2. structure	- 3 - 2. APP
download	
2.1. account registration.....	- 5 -
3. Adding and managing cameras.....	
3.1. 4G networking method.....	- 6 -
3.2. Network cable method.....	-
7 - 3.3. WiFi connection settings camera.....	- 9 -
4. Equipment list and operation interface.....	Basic
4.1. interface.....	- 17 - 4.2. 4G
dial-up detection.....	-17-

1. Introduction to the overall structure of the camera

1.1. Camera structure

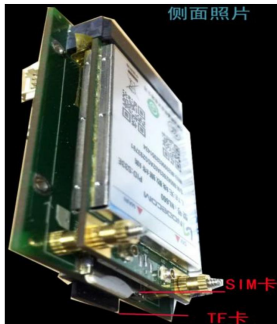
1. Introduction to front parts



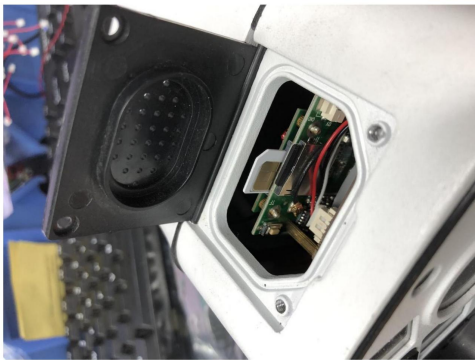


1.2. Internal structure

1. Ordinary model card insertion method



The SIM card has the notch facing outward, and the chip is attached to the board.



2. APP download

Android phones and Apple phones can scan the 2D download and installation below, and install it.

Zhuo mobile phone can also search for 4GCMS in the Baidu App Store, and Apple mobile phone can also search for 4GCMS on the AppStore to download and install!



2.1.Account registration

After logging in to the 4GCMS client, click "Register" in the lower part of the main interface.

After entering your account number and password on the registration interface, click "Register" to submit.

After registration is completed, jump to the login interface.

3. Add and manage cameras

4GCMS provides multiple methods to add cameras and other equipment to suit

Different device types and network environments. 4GCMS cameras can pass

There are three ways to connect to the network: 4G, network cable, and WiFi. The following are three ways

Instructions for setting up the camera.

3.1. 4G networking method

1. Make sure that the SIM card is normal, turn on the phone, and start the camera to

It takes about two or three minutes to connect to the Internet. The camera must be connected to the Internet to access the Internet.

The binding operation is performed, please wait patiently.

2. Install the camera, log in to your account, and click the "+" sign in the upper right corner.

(Connect the mobile phone **WiFi** to the hotspot of the camera device before installing the camera:

3.3-1 Operation) Select the list added by serial number and select the

The bound camera (if there is no WiFi link to the camera, scan the second

QR code ID or enter the ID manually), click Next, do not operate at this time

Use your phone until it shows that the camera has been added to your account, click

Finish.

3.2. Network cable method

Plug in the Internet cable and wait for the camera to fully start (it takes about a minute).

Then find the device in local devices and click (info key),

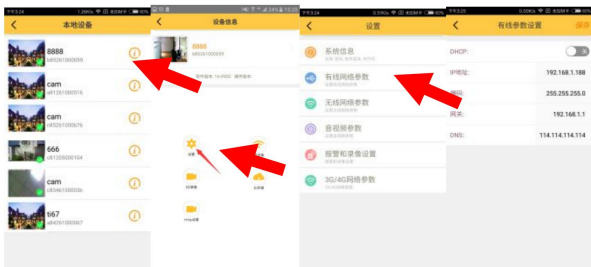


Click Settings, then click Wired Network Parameters to set the correct IP address

Or turn on DHCP, click Save, complete these settings, and then pass

Add the camera with the serial number. If the addition fails, please restore the factory settings.

Newly added.



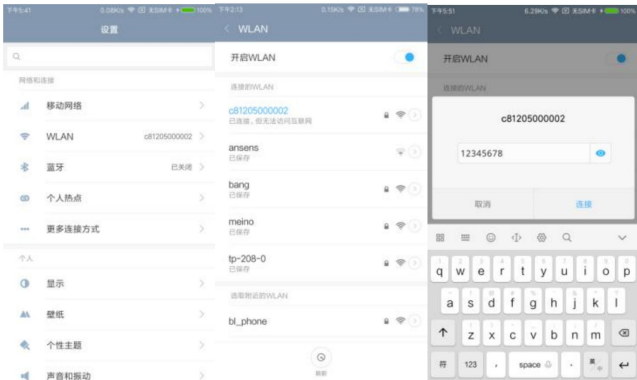
3.3. WiFi connection settings camera

- 1) Connect the mobile phone **WiFi** to the hotspot of the camera device

After the device starts, it will send out a WiFi name starting with c8**, advanced

Enter the mobile phone WiFi interface and connect to this WiFi. The default password is

12345678

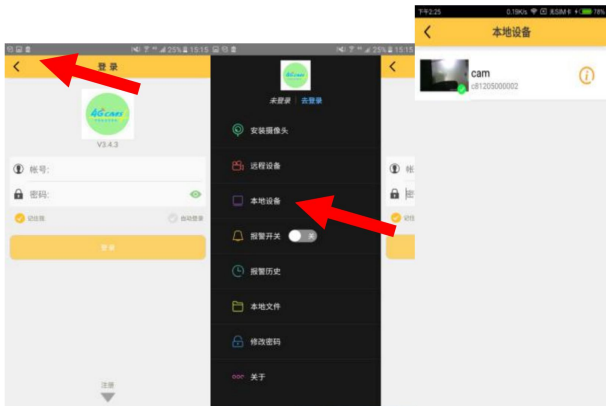


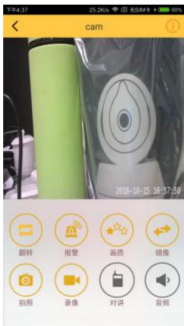
2) Use **4GCMS** local list to view camera video

Open the 4GCMS software, click on the local device in the side sliding bar, and pull down to swipe

New will see the device. (At this time, you are in local direct connection viewing mode, click

Click the list to watch the video directly without consuming data)





Vertical screen and

horizontal screen 3) To set up the camera, you need to connect it to the router

Set the WiFi to which the camera is connected so that the camera can access the Internet. click local



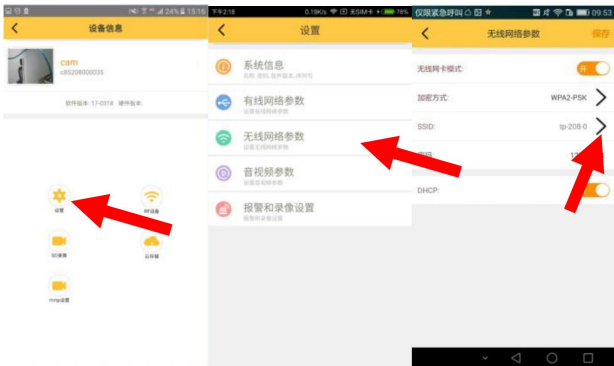
(info button) in the device list to enter the device information interface.

Then click Settings, select wireless network parameters, and turn on wireless network card mode.

The SSID is the name of the WiFi the camera wants to connect to, and then enter the password

code, click Save. (Click > to pop up the WiFi list, select the one you want

connected WiFi)



4) Add camera to **4GCMS** account

After the WiFi is set up successfully, the WiFi signal starting with c8** will be transmitted from the mobile phone disappears from the WiFi list. At this time, you need to exit the APP and enter the

Go to the machine WiFi setting interface and connect to the WiFi connected to the camera.

Open the APP again, enter your account and password, log in successfully, click on the side

Install the camera in the slide bar, select Add by serial number, and select

In the list of numbers added, select the camera you want to bind (you may need

It will take two or three minutes for the camera to appear in the list, please wait patiently), click

Next step, do not operate the phone at this time until it shows that the camera has been added.

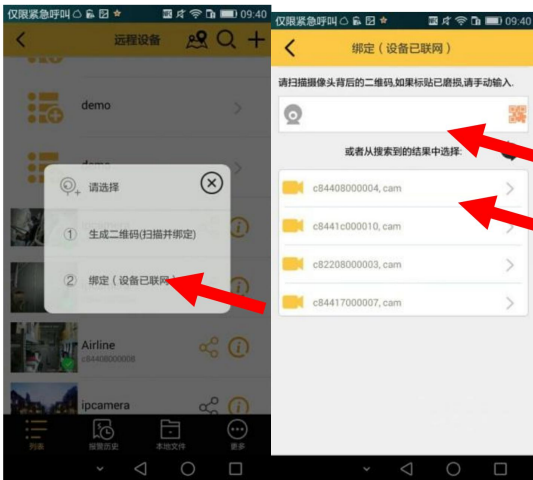
Add it to your account, click Finish, and finally return to the side sliding bar, click

Remote devices, pull down to refresh the list, and you can see the ones you successfully added.

Camera. If the camera does not appear in the list, it means

The camera failed to connect to the network. At this time, you need to press and hold the camera **reset** button for 5 seconds.

Restore the factory settings above, and then set it up again according to the tutorial.





4. Equipment list and operation interface

4.1. Basic interface

4GCMS After successfully logging in to the client, you will enter the remote device management page, as shown below:

Slide menu button



map mode

Camera thumbnail



ipcamera
c8441c000010



Add camera

Camera online



ipcamera
c84416000034



local camera

Camera offline



Airline
c84408000008



Device List



ipcamera
c84419000028



Device Information



ipcamera
c84431000004



ipcamera
c84431000003



列表



报警历史



本地文件



更多

Click the icon on the right in the device list to enter "Device Information"

Interface, delete the device, modify the device name, update the location,

Parameter query and setting.

4.2. 4G dial-up detection

Select the LAN camera, click the corresponding camera icon, enter the setting interface and click the ID number to see the dialing information.

